

# RHINOZ

## MULTICOLOUR



# RHINOZ Multicolour

Granite Style Spray Acrylic Paint







MA-05



MA-03



RF-125

# RHINOZ

## MULTICOLOUR Autumn

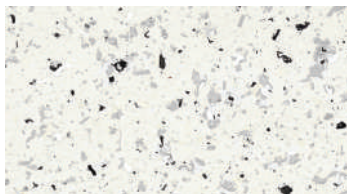
A ready-to-use acrylic spray paint is designed with the inspiration of granite stone for seamless natural stone pattern creation on furniture, wall, and ceiling. It comes with selections of base colours the offers various styles while provides durability, excellent adhesion to various surfaces such as concrete, mortar, fiber cement, gypsum board, etc. It contains antimicrobial agent that prohibit growth of fungi and algae, for longer usage.

### Application

1. Surfaces must be clean, dry, structurally sound, free from other materials that will have effect on adhesion.
2. Apply 1 coat of RHINOZ Multicolour Base Tone, then leave it dry for 1 hour.
3. Spray RHINOZ Multicolour by hopper gun.
4. Leave to completely dried for 24 hours, apply RHINOZ Multicolor Seal Coat. The Multicolor surface will be completely cured in 7 days.



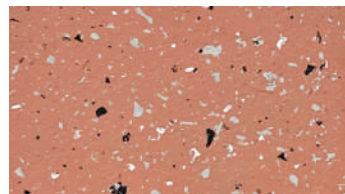
### Special Property of RHINOZ Multicolour



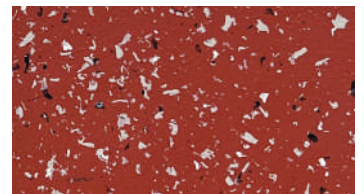
MA-01



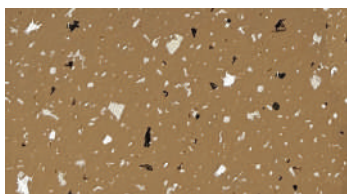
MA-02



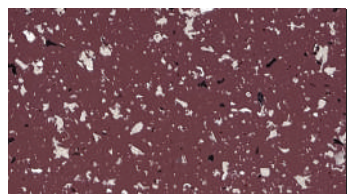
MA-03



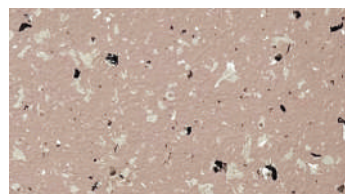
MA-04



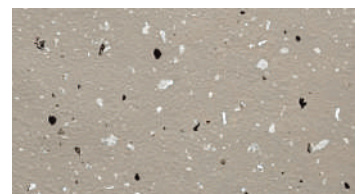
MA-05



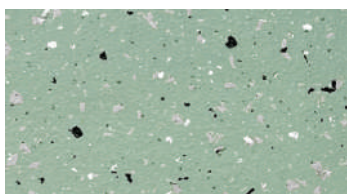
MA-06



MA-07



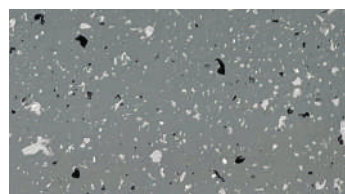
MA-08



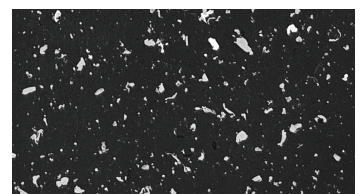
MA-09



MA-10



MA-11



MA-12





Step	Product	Tools	No. of Coat	Dry Time Between Coats	Coverage
1. Paint	RF-124 RHINOZ Multicolour Base Tone	Roller/ Brush	2	1-2 hours	30-40 sqm/ gal/ coat at 100 microns
2. Spray	RF-125 RHINOZ Multicolour	Sprayer	1	24 hours	10-15 sqm/ gal/ coat at 50-80 microns depending on pattern
3. Sealer	RF-185 RHINOZ Multicolour Seal Coat	Roller/ Brush/ Sprayer	2	1-2 hours	10-15 sqm/ lit/ coat at 100 microns



### RF-124 RHINOZ Multicolour Basetone

High quality acrylic priming paint for extra adhesion and long lasting performance without peeling, suitable for interior and exterior on concrete, mortar, fiber cement and gypsum board.



### RF-125 RHINOZ Multicolour

Ready-to-use acrylic spray paint to easily create granite pattern without strong odour, suitable for interior and exterior wall, ceiling, and furniture.



### RF-185 RHINOZ Multicolour Seal Coat

Water-based clear sealer to prevent scratch and maintain the aesthetic and performance without strong odour.



**Blue Label Company Limited**  
48/58 Moo 1, Ekachai Road, Kokkrabue Subdistrict,  
Mueang District, Samut Sakhon Province 74000  
TEL: 034-494-774 [www.bluelabelgroup.com](http://www.bluelabelgroup.com)



RHINOZ



[bluelabel.innovation](https://www.youtube.com/bluelabelinnovation)

LINE @bluelabel

