

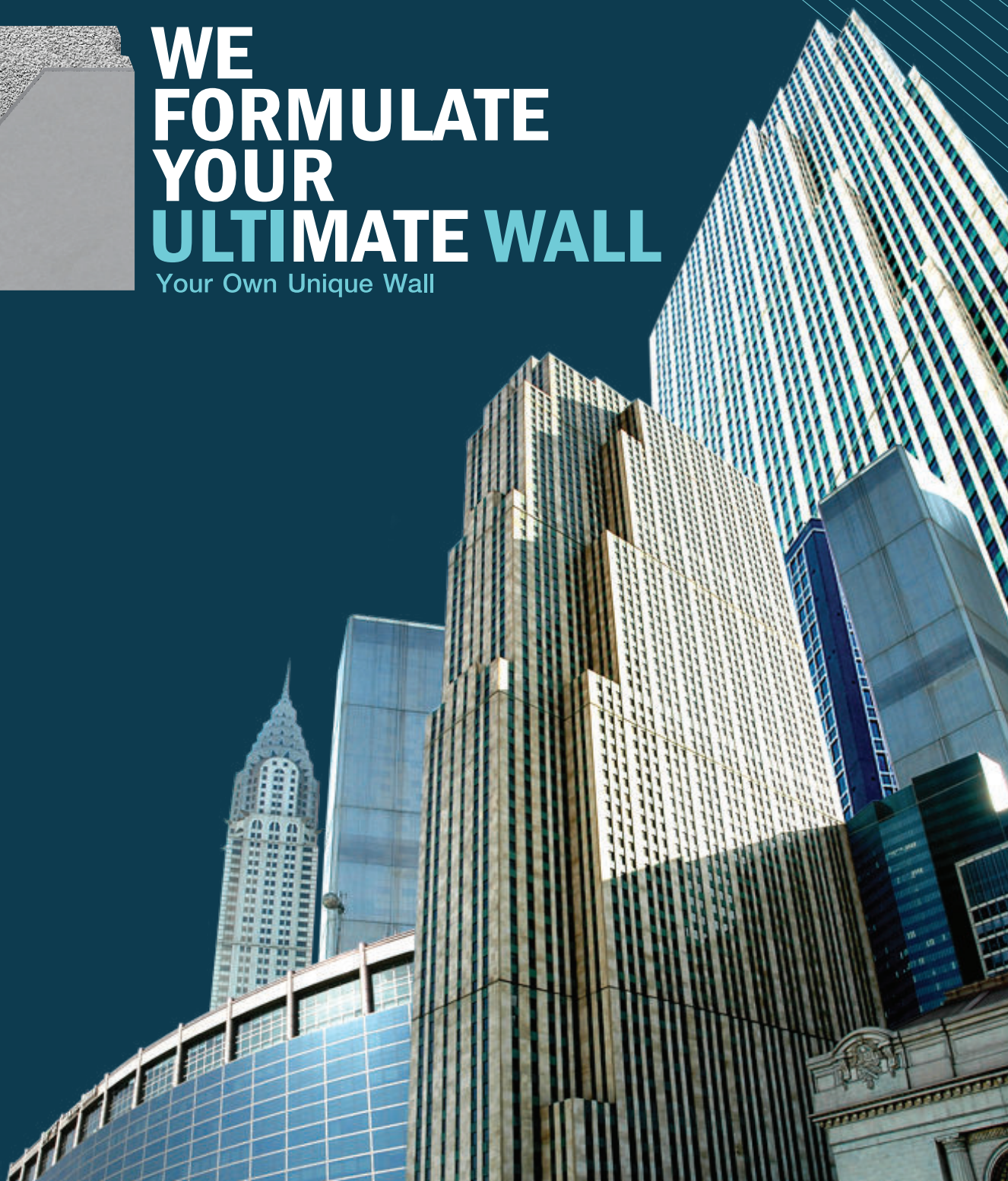
# RHINOZ ULTI WALL

The Ultimate Solution to All Wall Problems



WE  
FORMULATE  
YOUR  
ULTIMATE WALL

Your Own Unique Wall





# RHINOZ ULTI WALL

## The Ultimate Solution to All Wall Problems

Ulti Wall is the new alternative wall solution that answers all pain points of builders and building users due to its selections of wall type, material type, and additional property that are customizable to suit all needs. Our main purpose is to achieve a better general property such as higher strength for higher load bearing ability or lighter weight for more economic construction, as well as the specialized property for specific function such as minimizing condensation for rooms with different temperature or shielding radiation for x-ray room, while lessen application problems, for better constructing and living experience.

With our expertise in construction chemical products, we offer a complete solution of designing, formulating, and manufacturing service of the compounds of wall material up until the finished products of installation, joint sealing, and finishing.

## WE FORMULATE YOUR ULTIMATE WALL

Your Own Unique Wall

### CLIENT'S REQUIREMENT

Scoping product and service, pain point and requirement, product concept, target market and customer, target application, project timeline.

### INITIAL PROPOSAL

Propose product concept and specification, confirm project directions, factors observation, application and equipment/machine potentials.

### RESEARCH & DEVELOPMENT

Chemical technology exploration, raw material sourcing, lab testing, formula selection, initial cost evaluation.

### PROTOTYPE / FIELD TEST

Real application and up-scaled test, factors analysis, result monitoring.

### PRODUCT CONFIRMATION

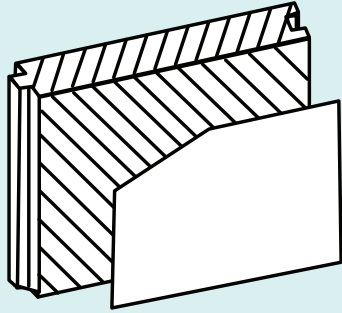
Product & service confirmation, document & report, business model, business agreement.



# CREATE YOUR OWN

## ULTIMATE WALL SOLUTION

### CUSTOMIZE YOUR WALL



Application :

- ☐ Wall Panel    ☐ Block    ☐ Floor Slab    ☐ Roof  
☐ In Line    ☐ At Site

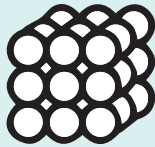
Type :

- ☐ Sandwich Panel    ☐ Fairfaced Panel    ☐ Dry Wall  
☐ ALC/AAC    ☐ CLC    ☐ Hollow Core  
☐ Other .....

Core Material .....

Face Material .....

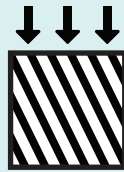
### CUSTOMIZE YOUR SPECIFICATION



Density

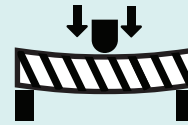
Target Specification :

kg/m<sup>3</sup>



Compressive  
Strength

mpa



Flexural  
Strength

mpa

Other

## CORE SELECTION

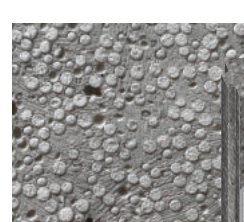
### ULTI WALL Light

Extra Light Weight, Increased Strength

- Increased impact resistant
- Thermal and sound insulation
- Consistency of EPS dispersion
- Improve condensation resistant property
- Cost-effective foundation system
- Improved drill and hang capability
- Antimicrobial, hygienic
- Exterior and moist area even with out topping

Density (28 days) = 800-850 kg/m<sup>3</sup> (adjustable)

Compressive Strength (28 days) = 4-5 mpa (adjustable)



EPS Foam +  
Light Weight Cement

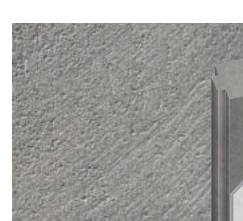
### ULTI WALL Green

Wall of the Future, Clean Living, Clean Planet

- Non-toxic, eco-friendly
- Increased impact resistant
- Thermal and sound insulation
- Improve condensation resistant property
- Applicable for organic/bio license
- Improved drill and hang capability
- Antimicrobial, hygienic
- Exterior and moist area even with out topping

Density (28 days) = 850-900 kg/m<sup>3</sup> (adjustable)

Compressive Strength (28 days) = 4-5 mpa (adjustable)



Bio-based Compound +  
Light Weight Cement

### ULTI WALL Power

Higher Weight in Less Volume

- Withstand mechanical force with lower volume
- For radiation shielding application
- Decrease vibration and dampen sounds
- Heat and cold storage (underfloor heating or ice rinks)
- Lower volume for space and design limitation
- Ideal for underwater construction (upward pressure)
- Antimicrobial, hygienic
- Exterior and moist area even with out topping

Density (28 days) = 3,700-3,800 kg/m<sup>3</sup> (adjustable)

Compressive Strength (28 days) = 65-70 mpa (adjustable)



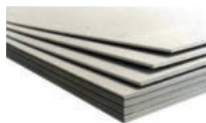
Magnetite Aggregate +  
High Density Cement



# CREATE YOUR OWN

## ULTIMATE WALL SOLUTION

### FACE SELECTION



Fiber Cement Board



Wood Cement Board



Gypsum Board



MGO Board



Shotcrete (Precast Topping)



OSB Board

### FEATURE SELECTION



#### ULTRALITE PERLITE

- Non-metallic volcanic mineral heated to expand 4-20 times
- Non-conductive tiny air cells in perlite particle
- Ultra lightweight
- Permanent excellent thermal insulation



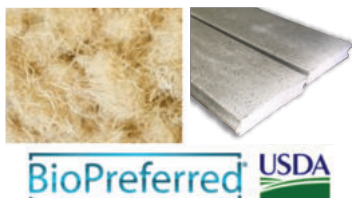
#### SILICA AEROGEL

- Best insulator with low thermal conductivity (0.0197W/(m-k))
- Fire Resistance with wide operating temperature
- Lightness & volumization, with porosity >90%
- Hydrophobic, repels water & moisture
- Reduce sound transmission with energy dampening property



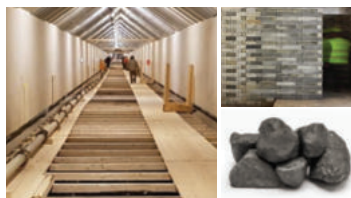
#### PIGMENT

- Creating added value and structural improvement by adding permanent beauty
- Excellent lightfastness and weather resistance property for intensive exposure
- Integral coloring, remain aesthetic even when some part breaks off



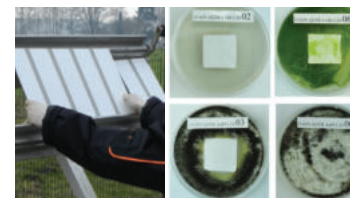
#### BLUE MORTAR

- Adding new organic compound to meet USDA BioPreferred standard of bio-based requirement
- Testing using ASTM D6866 for bio-based content testing (total organic carbon content)



#### MAGNADENSE

- Space and design limitation but maintain force withstanding property
- Radiation shielding : hospital, lab, nuclear plant
- Reduce vibration & dampen sound : railway Traffic
- Heat & cold storage : ice rinks, underfloor heating
- Underwater : quay, gravity-based structure



#### HYGIENIC & ANTIMICROBIAL PROPERTY

##### APPLICATION

- Hospital and health care
- Elder care
- Clean room
- Laboratory
- Residential
- Kids room

##### ANTIMICROBIAL

- Mold
- Mildew
- Fungi
- Yeast
- Algae

### SUPPLY FORM



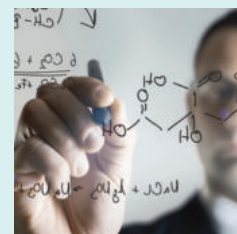
Powder Compound

- ☐ Semi-Finished
- ☐ Finished-Product



Liquid Compound

- ☐ Semi-Finished



- ☐ Formula
- ☐ Licensing

BLUE LABEL

BMS

BLUE LABEL Co.,Ltd.

48/58 Moo 1 Ekachai rd. Khok-kraeue, Mueng, Samutsakhon, 74000 THAILAND

Tel: (+66) 34-494-774 Email: info@bluelabelgroup.com



RHINOZ



bluelabel.innovation

www.bluelabelgroup.com

@bluelabel

