

RHINOZ

ARMOUR TEXTURE



RHINOZ ARMOUR TEXTURE

Waterproofing Textured Paint





RF-157

RHINOZ

ARMOUR TEXTURE

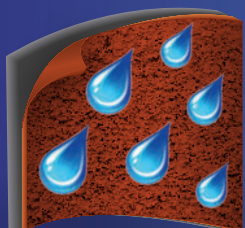
Waterproofing Textured Paint

A ready-to-use acrylic emulsion that provide both aesthetic and waterproofing function to prevent leakage from cracks for both interior and exterior applications. The paint is specially designed to apply with texture roller to create pattern and dimension to camouflage crack and allow flexibility. It provides high durability and adhesion to various surfaces such as concrete, mortar, fiber cement, gypsum board, etc. It contains antimicrobial agent that prohibit growth of fungi and algae, for longer usage when exposed to weathering.

Application

1. Apply 1 coat of RHINOZ Primer Bonding using roller and leave to dry for 15-30 minutes.
2. Stir RHINOZ Armour Texture until well mixed and apply 2 coats using texture roller with 1-2 hours dry time in between coats.
3. Leave to dry for 24 hours before usage.

Special Property of RHINOZ Armour Texture



EXCELLENT
WATERPROOFING

High performance elastomeric waterproofing membrane used to waterproof various surfaces for both internal and external area.





AT-08



AT-11



AT-01



AT-02



AT-03



AT-04



AT-05



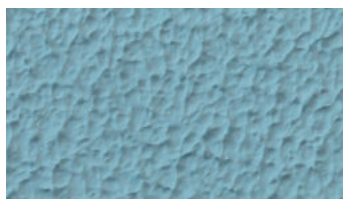
AT-06



AT-07



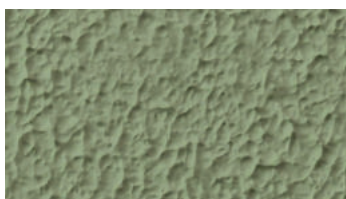
AT-08



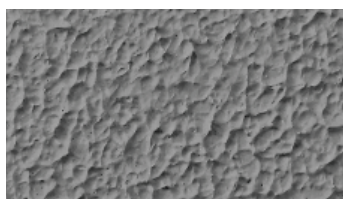
AT-09



AT-10



AT-11



AT-12





Step	Product	Tools	No. of Coat	Dry Time Between Coats	Coverage
1. Primer	RF-143 RHINOZ Primer Bonding	Roller/ Brush	1	15-30 minutes	15-30 sqm/ lit depending on substrate
2. Textured Paint	RF-157 RHINOZ Armour Texture	Texture Roller	2	1-2 hours	0.9-1.2 kg/ sqm/ coat at 1-2 mm thickness

*Actual color may differ from the photo or print-out due to screen display and printing process.



RF-143 RHINOZ Primer Bonding

Primer for extra adhesion and extra strength of the substrate to prevent peeling with no strong odour, suitable for both new and existing mortar.



RF-157 RHINOZ Armour Texture

Ready-to-use acrylic paint designed for texture creation with high flexibility and excellent waterproofing, suitable for crack camouflaging for both interior and exterior wall.



AB-031 RHINOZ Texture Roller

Light weight and easy-to-apply texture roller for application of RHINOZ Armour Texture to create texture and dimension to the design.



Blue Label Company Limited
48/58 Moo 1, Ekachai Road, Kokkrabue Subdistrict,
Mueang District, Samut Sakhon Province 74000
TEL: 034-494-774 www.bluelabelgroup.com



RHINOZ



bluelabel.innovation

@bluelabel

